

# The Joan Moshimer Rug Hooker Studio

## Kit Listing

Kits are complete with pattern printed on highest quality backing of your choice; pre-cut wool strips (except where noted); instructions and a color photo to use as a guide. Hook is NOT included. Slight color variations may occur due to availability of wools and limitations of printing process. \* Asterisk after kit name denotes patterns where background wool is available at extra charge.



KMP-79 Boy Rag Doll \*  
16 x 20" #4 Cut



KMT-11 Hex Sign  
9" round #4 Cut



KMP-176 Girl Rag Doll \*  
16 x 20" #4 Cut



KMT-17 Partridge Circle  
9" round #4 Cut



KMT-62 Wishing on a Star  
8" round #4 Cut



KMT-22 Heart Circle  
11 1/2" round #4 Cut



KMB-7 Shell Brick Cover  
4 x 8" #4 Cut



KMCS-276 Goat island Lighthouse  
18" round #6 Cut



KMB-22 Pineapple Brick Cover  
4 x 8" #6 Cut



KMB-6 Strawberry Brick Cover  
4 x 8" #4 Cut



KMCS-265 Tallulah  
15" round #4 Cut



KMCS-241 Hugga Bear  
15" round #4 Cut



KMCS-71 Pansy Trio  
15" round #4 Cut



KMCS-263 Top Cat  
15" round #4 Cut



KMCS-255 4 of July  
15" round #4 cut



KMCS-256 Shelburne Mermaid  
15" round #4 Cut



KMCS-235 Blueberries  
15" round #4 Cut



KMCS-202 Strawberry Primitive  
15" round #4 Cut



KHCS-71 Pinewoods  
15" round #4 Cut



KMCS-106 Scottie Dog  
15" round #6 Cut



KMCS-242 Vermont Shell  
15" round #4 Cut



KMCS-111 Spray of Tulips  
15" round #4 Cut



KMCS-269 Elsie the Cow  
15" round #6 Cut



KMCS-270 Clarence the Pig  
15" round #6 Cut



KMCS-271 Heddy Hen  
15" round #6 Cut



KMCS-272 Woolley Sheep  
15" round #6 Cut



KMP-247 Schoolhouse Christmas  
9.5 x 15" #4 Cut



KMT-64 Sweetest Angel  
10" round #6 Cut



KMP-169 Christmas Robin  
9 x 13" #4 Cut \*



KMP-2006 Santa Stocking  
10 x 15" #8 Cut



KM-385 Here Comes Santa Claus  
18 x 40" Uncut Wool



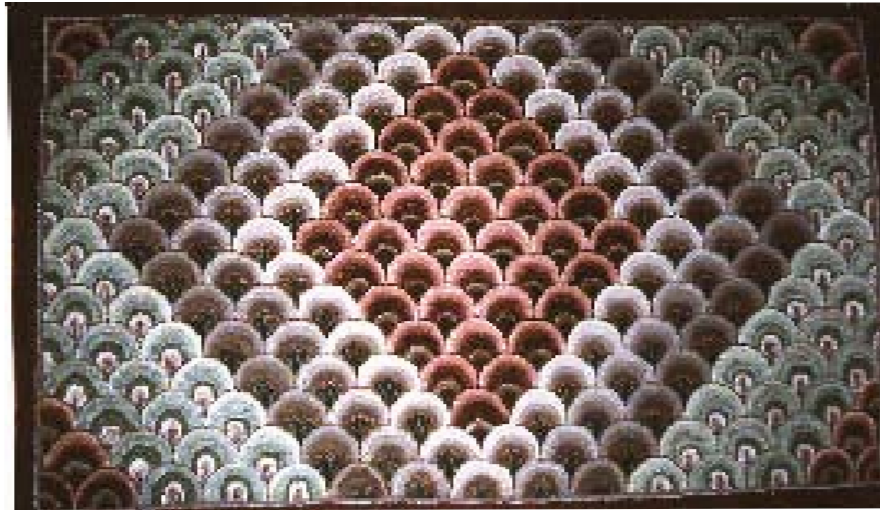
KMP-2003 Snowman Stocking  
10 x 15" #8 Cut



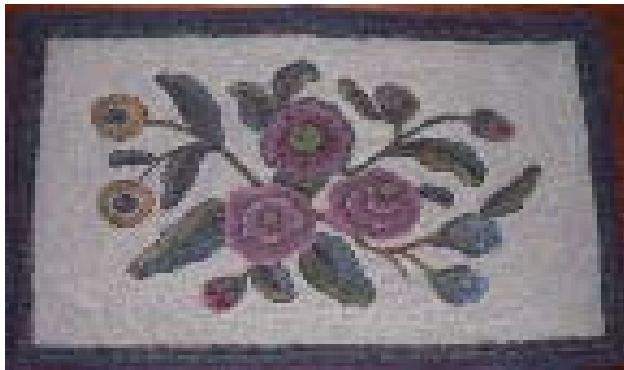
KM-357 Strawberry Basket  
25 x 42" #4 Cut



KM-360 Pineapple Threshold  
22 x 40" #4 Cut



KOSV-59 Vermont Shell Rug 28 x 41" #4 Cut



KH-965 Nottingham 25 x 36" #6 Cut  
Uses hand dyed wools



MPT-2001 4 Eggs in a Basket  
15 x 15" #8 Cut



KM-333 Wilhelmina\*  
18 x 18" #4 Cut



KM-386 Schoolhouse Rug  
23 x 34" #4 Cut



KMP-211 Happy Hooker  
8 x 12" #4 Cut



KM-81 Rosebush Cardinals\*  
12 x 16" #4 Cut



KMP-178 Peter Rabbit \*  
16 x 20" #4 Cut



KMT-255 Cozy Day  
14 x 18" #8 Cut



KMP-177 Tiger Cat \*  
16 x 20" #4 Cut



KMP-190 Basset Hound  
20 x 22" #4 Cut



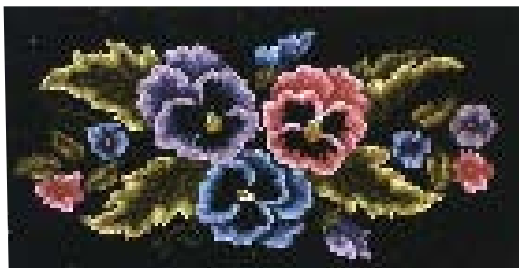
KMP-267 Damask Rose  
11 x 17" #4 Cut



KMT-8 Baby Owl\*  
8" #4 Cut



KMP-196 Chanticleer  
9" round #4 Cut



KOSVFS-23 Pansy Footstool  
11 x 18" #4 Cut



KMT-204 Homestead Footstool  
8 x 16" #4 Cut



KM-429 Lovey Doves 16 x 22"  
Uncut wool or #8 cut



KMP-239 Two Teddy Bears  
11 x 19" #4 Cut



KM-428 Maine Moose 18 x 26"  
Uncut Wool or #8 Cut



KM-351 The Holy Family  
18" round #4 Cut



KM-393 Donna's Dolls  
22 x 37" #6 Cut



KMT-18 Harvest Time  
8.5" round #4 cut



KM-396 Geese and Cow 22 x 34" #4 Cut



KM-443 Memorial Star Mat 14 x 32" Uncut Wool



KMP-189 Black Eyed Susans\*  
16 x 20" #4 Cut



KMP-422 Olivia  
13 x 19" #4 Cut



KMP-78 Cinderella Rose\*  
12 x 16" #4 Cut



KMP-188 Tabby Cat  
15" round #4 Cut



KMP-237 Schoolhouse Pillow  
14 x 14" #4 Cut



KMP-68 Chickadee and Barberries  
8 x 10" #4 Cut



KMP-168 Koala Bears\*  
14 x 20" #4 Cut



KMP-240 Sunbonnet Girl & Boy  
13 x 17" #4 Cut



KMT- 256 Flower Kitty  
14 x 16" #8 Cut